

MODEL FD

ENGINE

Make: John Deere
Model: 4045T
Horse Power Rating: 125 HP / 93.21 Kw
Rated Torque: 328 ft/lbs / 445 Nm
Fuel: Diesel
Cooling: Water

TRANSMISSION

Make: Funk
Model: 2000 Series
Speeds: 3 Forward / 3 Reverse

TORQUE RATING

1st Gear: 61,166 ft/lbs / 82.94 kNm
2nd Gear: 26,376 ft/lbs / 35.77 kNm
3rd Gear: 10,562 ft/lbs / 14.32 kNm

DIMENSIONS

Overall Unit Height: 9' 6" / 2.92 m
Overall Unit Width: 102" / 2.59 m
Overall Unit Length: 32' 4" / 9.85 m

AUGER CAPACITY

Continuous: 54" / 1219.2 mm
Intermittent: 72" / 1828.8 mm

DIGGING DEPTH

Depth: 50' / 13.716 m

KELLY BAR

Outer Bar: 6" / 152.4 mm
Solid Inner Bar: 4.25" / 107.95 mm

OUTER KELLY BAR

Crowd Force: 23,550 lbs / 104.6 Kn
Control: Hydraulic reeving cylinder

INNER KELLY BAR WINCH

Make: Pullmaster
Model: M-18
Capacity: 18,000 lbs / 80.0 Kn
Line Speed: 195 ft/min / 59 m/min (full drum)

SERVICE WINCH

Make: Pullmaster
Model: PL-5
Capacity: 5,000 lbs / 22.2 Kn
Line Speed: 76 ft/min / 23 m/min (full drum)

DRIVE GEARS

Final Drive Gears: Spiral bevel gears delivering power to kelly bar through a 4 roller drive assembly

MAST

Articulation Over Vertical: 10 degrees
Side Articulation: 10 degrees left and right

ROTATION

Bearing: Rotation ring gear, 53" diameter, gear reduction box with internal brake system

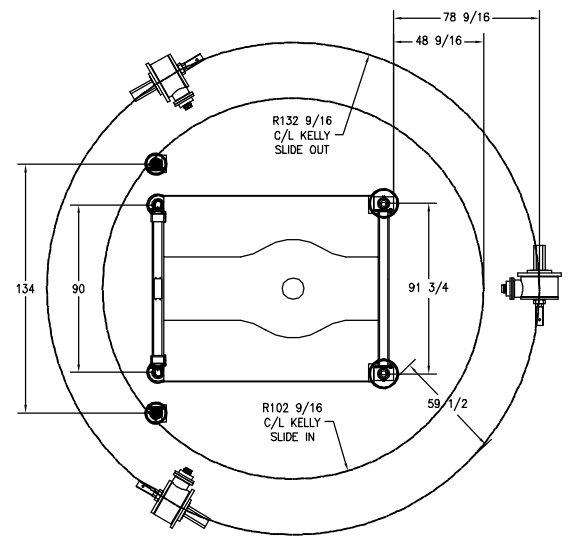
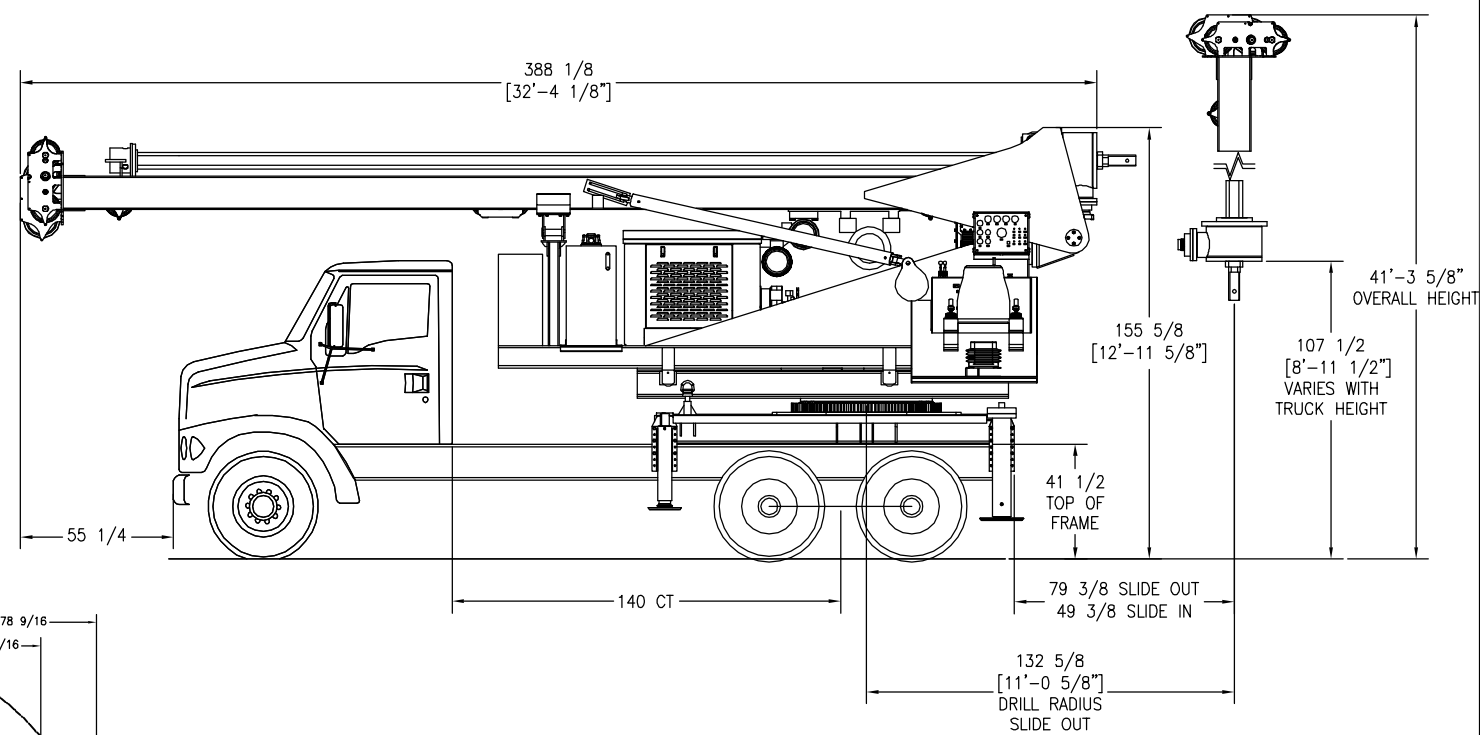
OUTRIGGERS

Rear Supports: Fixed, straight down jacks
Front Supports: Hydraulic out and down jacks
Rear Outrigger Spread: 90" / 2.3 m
Front Outrigger Spread: 134" / 3.4 m

HIGHWAY MANUFACTURING
333 2ND STREET NE
HOPKINS, MN 55343
PHONE: 952.938.2889
FAX: 952.938.0159
WWW.ABM-HIGHWAY.COM



ITEM	QTY	PART No.	DESCRIPTION
------	-----	----------	-------------



DESCRIPTION
HIGHWAY FD-50 DIMENSIONS