



VO-350/355-MHI

Insulated Articulated Overcenter Aerial Lift



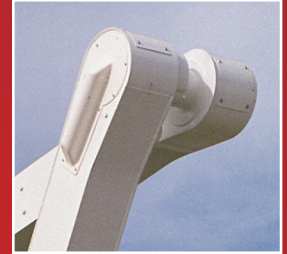
DEMAND BETTER

Boom Latch Available



700 lb. Total Platform Capacity
(350 lbs. in Each Platform)

Positive Knuckle Linkage



Cylinder Rods Fully
Retracted in
Stowed Position



- Working Height: Up to 60' 4"
- Horizontal Reach, Overcenter: Up to 47' 3"
- Horizontal Reach, Non-Overcenter: Up to 34' 8"




TIME
MANUFACTURING COMPANY

For more information about the VO-350/355-MHI or any of the other outstanding VERSALIFT machines, contact your authorized VERSALIFT Distributor or call 1.800.825.1085.



VO-350/355-MHI

Insulated Articulated Overcenter Aerial Lift

GENERAL SPECIFICATIONS

(Based on 40 in (1.02 m) Frame Height)

	VO-350-MHI	VO-355-MHI
Horizontal Reach Overcenter	42 ft. 3 in. (12.9 m)	47 ft. 3 in. (14.4 m)
Horizontal Reach Non-Overcenter	31 ft. 9 in. (9.7 m)	34 ft. 8 in. (10.6 m)
Standard Platform Capacity (each platform)	300 lbs. (136 kg)	300 lbs. (136 kg)
Maximum Platform Capacity (each platform)	350 lbs. (160 kg)	350 lbs. (160 kg)
Maximum Jib Capacity	2,000 lbs. (905 kg)	2,000 lbs. (905 kg)
Lower Boom Lift Eye Capacity	3,500 lbs. (1587 kg)	3,500 lbs. (1587 kg)

With P-700 Pedestal (Standard)

	VO-350-MHI	VO-355-MHI
Height to Bottom of Platform	50 ft. 4 in. (15.34 m)	55 ft. 4 in. (16.87 m)
Working Height	55 ft. 4 in. (16.87 m)	60 ft. 4 in. (18.4 m)
Stowed Travel Height	10 ft. 11 in. (3.32 m)	10 ft. 11 in. (3.32 m)
Weight of Lift w/Outriggers and Sub-frame	10,140 lbs. (4600 kg)	10,330 lbs. (4685 kg)

Boom Action

Upper-Boom	Articulation is 210° relative to lower boom.	
Lower-Boom	Articulation is 100°, from horizontal to 10° past vertical.	
Rotation	360° continuous	360° continuous

Upper Boom Insulation Gap (with or without test bands)

	145.5 in. (3.70 m)	175.5 in. (4.46 m)
Lower Boom Insulation Gap	24in (0.61 m)	24in (0.61 m)

Hydraulic System

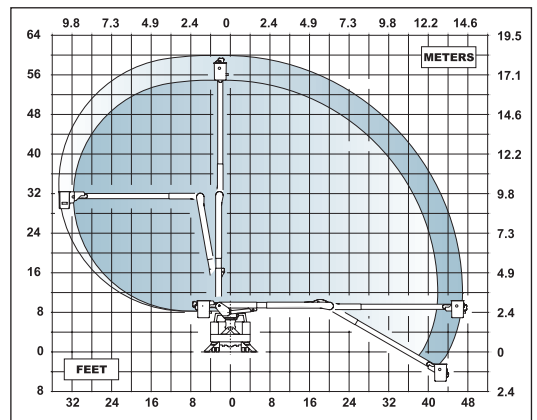
Operating Pressure	3000 PSI (210 kg/cm ²)	3000 PSI (210 kg/cm ²)
Flow Rate	10 GPM (38 lpm)	10 GPM (38 lpm)
Filtration	10 micron return	10 micron return
	100 mesh suction	100 mesh suction
System Type	Closed center	Closed center
Power Source	PTO pump	PTO pump

NOTE:

1. Specifications may vary without prior notification.
2. Required GVWR can vary significantly with chassis, lift mounting location, service body, accessories, and desired payload.



- Platform Capacity Variations
- Two-Speed Manual Throttle Control
- Hydraulic Extending Jib
- Emergency Power
- Category B Dielectric Rating
- Outrigger/Boom Interlock System




TIME
 MANUFACTURING COMPANY
 P.O. Box 20368
 Waco, TX 76702-0368
 254.399.2100
 Fax: 254.399.2651
 1.800.825.1085
 www.timemfg.com