



# VO-40-MHI

Insulated Articulated Overcenter Aerial Lift



## DEMAND BETTER

1,100 Jib Capacity

Positive Knuckle Linkage

Ground and Service  
Body Access from  
Bucket



- Working Height: Up to 44' 10"
- Horizontal Reach Over Center: Up to 31'
- Horizontal Reach Non-Over Center: Up to 29' 11"
- Platform Capacity: Up to 400 lbs.
- Mounts on 17,500 GVW Chassis

Cylinder Rods Fully Retracted  
in Stowed Position



For more information about the VO-40-MHI or any of the other outstanding VERSALIFT machines, contact your authorized VERSALIFT Distributor or call 1.800.825.1085.



# VO-40-MHI

## Insulated Articulated Overcenter Aerial Lift

### GENERAL SPECIFICATIONS

(Based on 40 in (1.02 m) Frame Height)

Horizontal Reach Overcenter	31 ft. (9.4 m)
Horizontal Reach Non-Overcenter	29 ft. 11 in. (9.1 m)
Standard Platform Capacity	350 lbs. (160 kg)
Maximum Platform Capacity	400 lbs. (183 kg)
Maximum Jib Capacity	1,100 lbs. (500 kg)
Lower Boom Lift Eye Capacity	1,500 lbs. (680 kg)

### With Standard Pedestal

Height to Bottom of Platform	39 ft. 10 in. (12.1 m)
Working Height	44 ft. 10 in. (13.6 m)
Stowed Travel Height	10 ft. 3 in. (3.1 m)
Weight of Lift w/o Outriggers or Subframe	3,500 lbs. (1590 kg)

### Hydraulic System

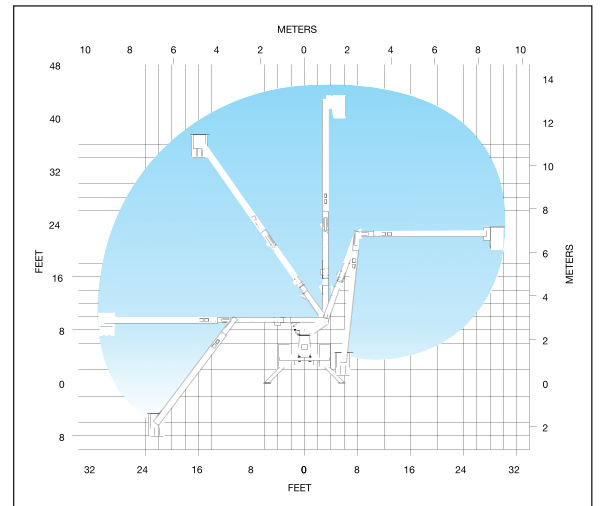
Operating Pressure	2500 PSI (175 kg/cm <sup>2</sup> )
Flow Rate	6 GPM (23 lpm)
Filtration	10 micron return 100 mesh suction
System Type	Open center
Power Source	PTO pump

#### NOTE:

1. Specifications may vary without prior notification.
2. Required GVWR can vary significantly with chassis, lift mounting location, service body, accessories, and desired payload.

### OPTIONS

- 400 lb. Platform Capacity
- 24 x 30 Platform
- Hydraulic Jib Pole Extension
- Two-Speed Manual Throttle Control
- Emergency Power
- Category B Dielectric Rating
- Outrigger/Boom Interlock System
- Tool Port Pressure & Flow Control
- Second Set of Tool Power Outlets
- Unitrol H.R.



  
**TIME**  
 MANUFACTURING COMPANY  
 P.O. Box 20368  
 Waco, TX 76702-0368  
 254.399.2100  
 Fax: 254.399.2651  
 1.800.825.1085  
 www.timemfg.com